

NEOLITH[®]

2018 Edition



AWARDS PREMIOS

2012



Best Of Kbis

2014



Architectural
Record Award



Pia
Awards



Alfa De
Oro



Installation
Awards

2015



Red Dot
Award



Pia
Awards



Kbb Readers
Choice Awards



Muuuzz
Awards



30 More
innovative
Products

2016



KB Culture
Awards



Pia Awards



Architectural
Record Award



Materialica
Gold Award



Best Of
Houzz



IDC
Innovation
Awards



A+design
Award



Kbb Readers
Choice Award



A+Award
Architizer



Muuuzz
Awards



Plus X
Award

2017



Red Dot
Award



Kbb Readers
Choice
Awards



Infoprogetto
Piu Innovativo



Muuuzz
Awards



Plus X
Award



Interior Design Best
of the Year Award
2017: Enigma



D Award



Interzum
Award



Premio
Interiores



AP50
Readers
Award



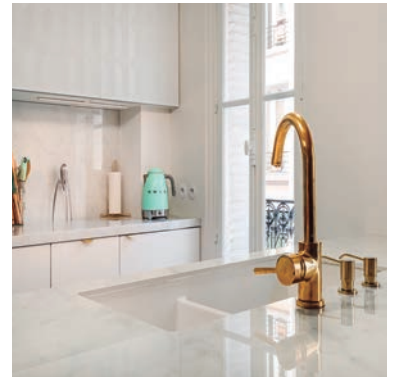
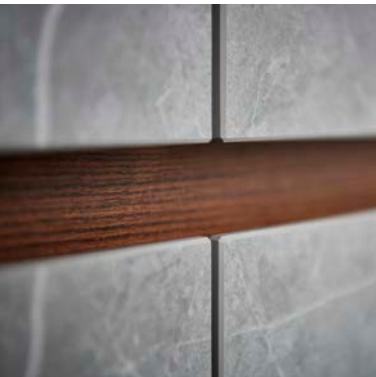
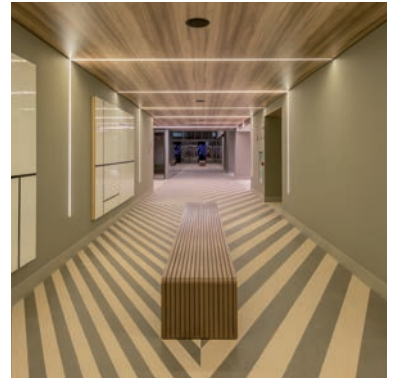
Great
Design
AD 2017



La Razon: Producto
del año en Innovación
y Tecnología

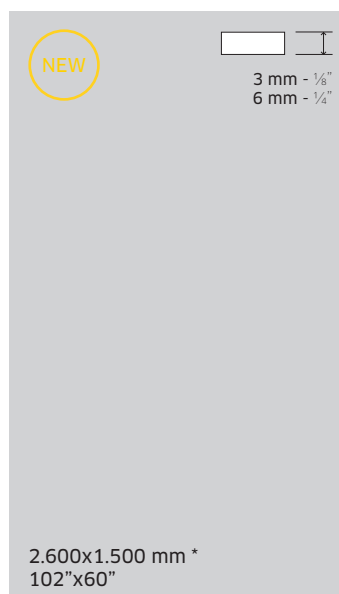
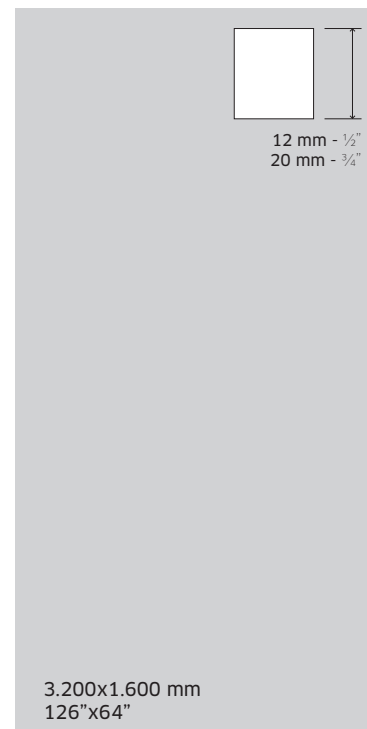
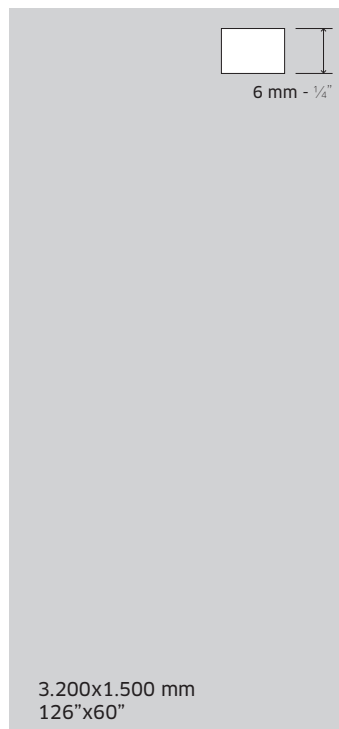
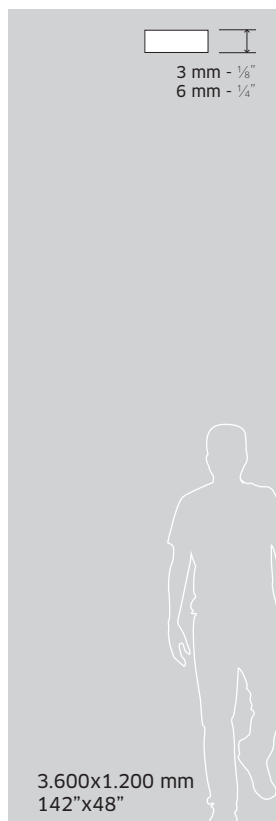


Architectural
Record



FORMATS, THICKNESSES & FINISHES

FORMATOS, ESPEORES Y ACABADOS



Cut to size formats and standard Tile formats are also available.
Formatos de corte a medida y formatos estándar de baldosa también están disponibles.

* This format is only available for projects, not in permanent stock.

* Este formato solo está disponible para proyectos, no en stock permanente.



SATIN

Completely matte finish. Highly resistant and ideal for commercial applications.

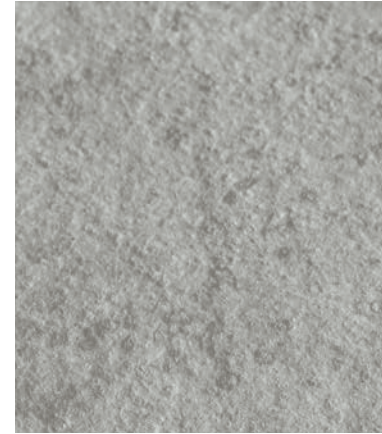
Acabado completamente mate. Altamente resistente e ideal para aplicaciones comerciales.



SILK

Matte finish with a thin layer of glaze that provides a subtle shine and a nice soft touch. Surface finish that results extremely easy to clean.

Acabado mate con una ligera capa de esmalte que aporta un brillo sutil y una agradable suavidad al tacto. Acabado superficial que resulta de fácil limpieza.



RIVERWASHED

Finish with a rough texture and relief that evokes sensations to the touch.

Acabado con textura rugosa y alto relieve para superficies que evocan sensaciones al tacto.



NATURAL HONED

Honed texture typical of natural stones: flat, soft, without any glossiness and completely matte.

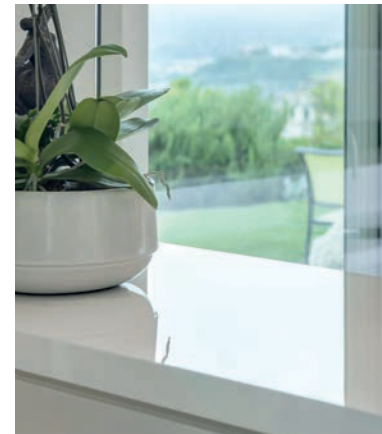
Textura apomazada típica de las piedras naturales: lisa, suave, sin brillo y completamente mate.



DÉCOR POLISHED

The Décor Polished confers a perfect linear reflection to the colors of the Classtone Collection which gains in depth and elegance.

Décor Polished confiere un reflejo perfectamente lineal a los colores de la Colección Classtone, que gana en profundidad y elegancia.



NANOTECH POLISHED

With a high level of gloss, the Nanotech Polished confers a more sophisticated look to the Colorfeel Collection.

Con un nivel de brillo alto, Nanotech Polished confiere una imagen más sofisticada a la Colección Colorfeel.

TECHNICAL FEATURES

CARACTERÍSTICAS TÉCNICAS



WATERPROOF
IMPERMEABLE

Waterproof and resistant to liquids, with an absorption level of almost zero
Impermeable y resistente a líquidos, con un nivel de absorción próximo a cero.



RESISTANT TO SCRATCHES
RESISTENTE AL RAYADO

Its hard surface makes it resistant to scratches and abrasion.
Resistente al rayado y a la abrasión gracias a la dureza de su superficie.



**RESISTANT TO HIGH
TEMPERATURES**
RESISTENTE A ALTAS
TEMPERATURAS

It does not burn in contact with fire nor does it emit smoke or toxic substances when subjected to high temperatures.
No se quema en contacto con el fuego ni emite humo ni sustancias tóxicas al ser sometido a altas temperaturas.



EASY TO CLEAN
FÁCIL DE LIMPIAR

Resistant to any kind of chemical cleaning agent such as bleach or ammonia.
Resistente a cualquier tipo de agente químico de limpieza.



HYGIENIC
HIGIÉNICO

It does not give off any harmful substances and is totally suitable for contact with food.
NSF Certified.
No desprende sustancias nocivas. Es totalmente apto para el contacto con los alimentos.
Certificado NSF.



RESISTANT TO UV RAYS
RESISTENTE A LOS RAYOS UV

Being 100% natural, its colors do not fade away when being exposed to sun light or other extreme weather conditions.
Siendo 100% natural, los colores no se desvirtúan cuando el material se expone al sol o a condiciones meteorológicas extremas.



100% NATURAL
100% NATURAL

It does not give off any substances that are harmful to the environment.
No desprende ninguna sustancia nociva para el entorno.



RECYCLABLE
RECICLABLE

Up to 52% of recycled content in every slab. 100% recyclable.
Hasta un 52% de material reciclado en cada tabla. 100% reciclable.



LIGHTWEIGHT
LIGERO

Only 7 kg/m² (1.4 lb/sqft) in the 3 mm slab, 15 kg/m² (3.07 lb/sqft) in the 6 mm slab, 30 kg/m² (6.15 lb/sqft) in the 12 mm slab and 48 kg/m² (9.83 lb/sqft) in the 20 mm slab.
Sólo 7 kg/m² en la tabla de 3 mm, 15 kg/m² en la tabla de 6 mm, 30 kg/m² en la tabla de 12 mm y 48 kg/m² en la tabla de 20 mm.



RESISTANT TO BENDING
RESISTENTE A LA FLEXIÓN

It has a high shear rate, making it resistant to heavy loads and pressure.
Módulo de rotura elevado. Resistente a altas cargas de presión y peso.

COLLECTIONS COLECCIONES



CLASSTONE^{NEOLITH}

*Merging of two great times
in a single expression.*



TIMBER^{NEOLITH}

Stylish warmth.



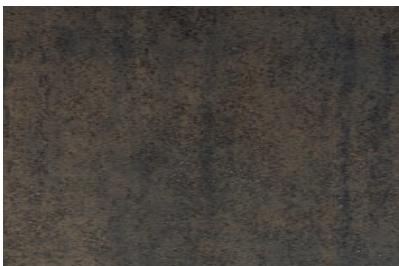
FUSION^{NEOLITH}

Natural sophistication.



STEEL^{NEOLITH}

*The Neolith collection that is
inspired by stainless steel.*



IRON^{NEOLITH}

*The strength of the
metallic shining.*



COLORFEL^{NEOLITH}

*Basic colors taken to the most
beautiful definition.*



textil^{NEOLITH}

*Textures and sensations
that are pleasing to the
eye and touch.*

More than 50 different models available.
Check www.neolith.com to discover them
all.

Más de 50 modelos diferentes disponibles.
Consulta www.neolith.com para
descubrirlos todos.

Produced by:

THEsize[®]
SURFACES

P.I. Camí Fondo, Supoi 8. C/ Íbers 31
12550 - Almassora (Spain)
+34 964 652 233
info@thesize.es
www.neolith.com

Marketed by:

NEOLITH[®]
DISTRIBUTION